



USB Link-All User Manual

Features:

1. Rig control, PTT, CW and audio interface all in one.
2. USB 2.0 compatible, USB powered.
3. Fully isolated design, 1:1 audio transceivers + photo isolators.
4. Adjustable audio level attenuation.
5. High speed rig control, 38400bps verified on FT-897 CAT port, 19200bps verified on IC-746 CI-V port.

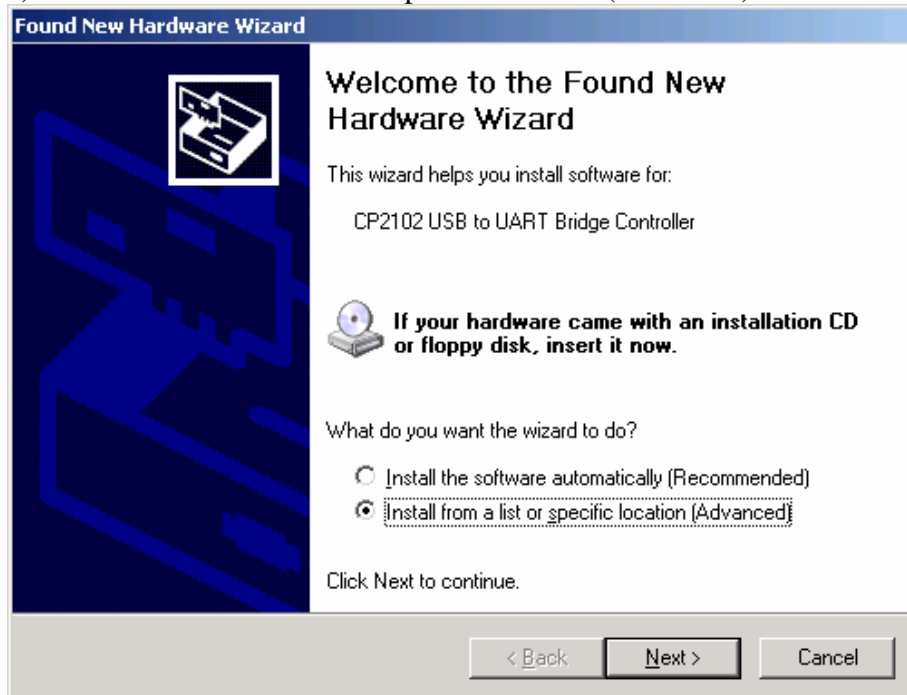
Driver Installation:

1. Unplug any connected USB Link-All interface.
2. Remove old drivers that have previously been installed. For Windows systems, open the Add or Remove Programs window from the Control Panel. Next, select each CP210x entry and click on Remove.
3. Run the driver executable according to the operation system version on your PC to extract the device driver files:

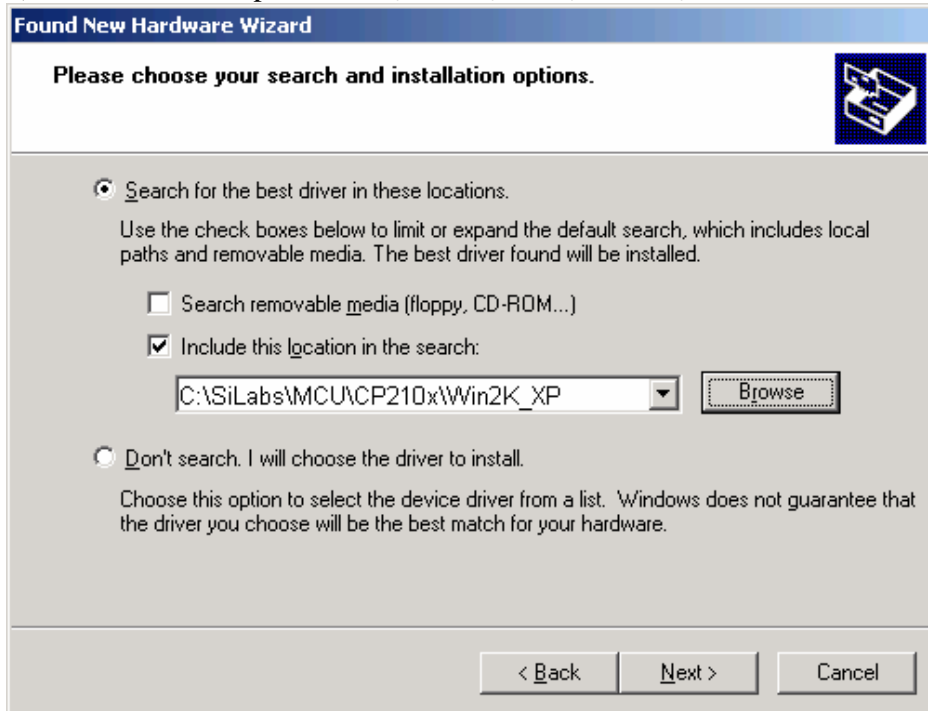
Windows 98SE → CP210x_VCP_Win98SE.exe
Windows 2000/XP → CP210x_VCP_Win2K_XP.exe
Windows 2003 → CP210x_VCP_Win2K3.exe

The default installation directory for this release is "C:\Silabs\Mcu\CP210x".

4. Attach the USB Link-All to one PC USB port.
5. Install the new drivers. For Windows XP systems, the Add New Hardware Wizard should open when a new device is detected.
 - a) Select "Install from a list or specific location (Advanced)"



b) Direct the driver path to "C:\SiLabs\MCU\CP210x\Win2K_XP" directory



c) Windows will then install the driver files by itself.

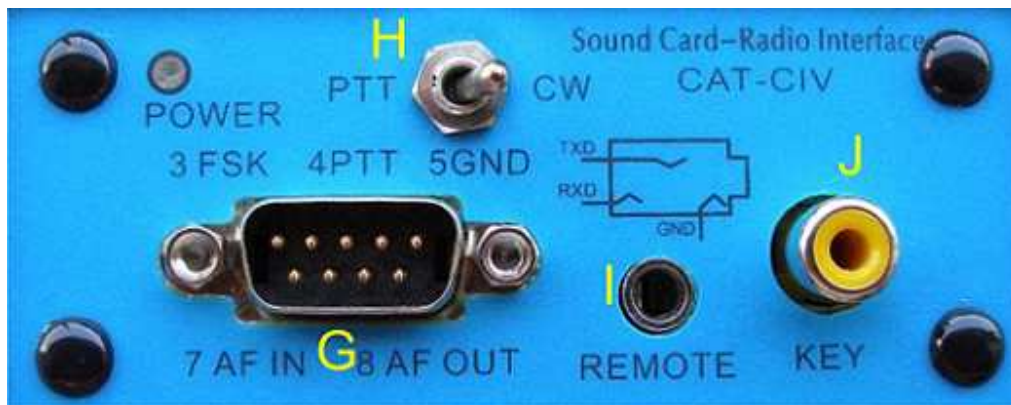


6. Restart your computer.

Cable Connections and Switch Definitions:



- A → Connect to Line-Out or Speaker socket of PC Soundcard
- B → Connect to Line-In or Microphone socket of PC Soundcard
- C → Connect to PC USB port
- D → Select to use DTR or RTS to control PTT/CW
- E → Transmission Indicator, light when transmitting.
- F → FSK indicator, only works with some ICOM transceivers on FSK mode.



- G → Connect to ACC port of transceiver.
- H → Select to control PTT or CW, switch to PTT on SSTV/RTTY/PSK31 etc.
- I → Connect to CAT(YAESU rigs) or CI-V(ICOM rigs) for remote control
- J → Connect to KEY port of the transceiver